



## Data Integration with Hyperion and why this is Important

Russ Rogers

Reid Kerr

September 4<sup>th</sup>, 2014

# Agenda

Introductions

What is FDMEE

Process Elements

Understanding Drillback

Upgrade Considerations

Emtec is Your EPM Expert

Q/A



# Introductions



# Introductions

## **Russ Rogers**

### **National Practice Lead – Close & Consolidations, Emtec**

- 22 Years of hands on consulting experience
- 9 Years at Hyperion (IMRS, Software, Solutions, etc)
- 12 Years Partner, Independent, Firms
- CPA, CMA, Certified (accounting, fx, IC, m&a)
- 312-561-3398 office / 816-721-1908 mobile (Go Royals)
- Russell.Rogers@emtecinc.com

## **Reid Kerr**

### **Senior Lead – Close & Consolidations, Emtec**

- 21 Years of hands on consulting experience
- 8 Years at Hyperion (IMRS, Software, Solutions, etc)
- 12 Years Partner and Independent Firms
- CPA, CMA, Certified (background in accounting, fx, m&a)
- 336-996-4242 office / 336-210-6934 mobile
- Reid.Kerr@emtecinc.com



## What is FDMEE?

## A Quick Poll

1. How many of you use EPM or its Components?
2. What versions are you on?
3. How many of you are scared to death of upgrading to FDMEE?
  - HEARD OF JYTHON? (BOO!)
4. How many of you use ERPi?

**FDMEE is available beginning with EPM 11.1.2.3.x**

## Financial Data Quality Differentiated

Financial Data Quality Management (FDM) is a business issue, and is defined as the practice by which companies can effectively and consistently combine the following factors:

- Financial data collection and transformation
- Repeatable financial processes
- Internal controls
- Audit trails with dynamic drill through
- Write-back capability

*FDM helps finance users increase their confidence in the numbers and lowers their cost of compliance by eliminating data integrity risks associated with collecting, mapping, validating, and moving critical financial data from across the enterprise.*

# Financial Data Quality Management – Enterprise Edition

## Financial Data Quality Management, Enterprise Edition

- FDM and ERP Integrator combined into a single product (Based on ODI with the FDM process) wrapper
- New Customers may only license FDMEE
- Built on Oracle Fusion Middleware platform
- Rebranded as FDM Enterprise Edition
- Windows Based FDM still available for existing customers
  - **11.1.2.3 is terminal release of FDM**
  - **Migration to FDMEE required starting with 11.1.2.4**
- New Customers may only license FDMEE

## FDM Adaptors

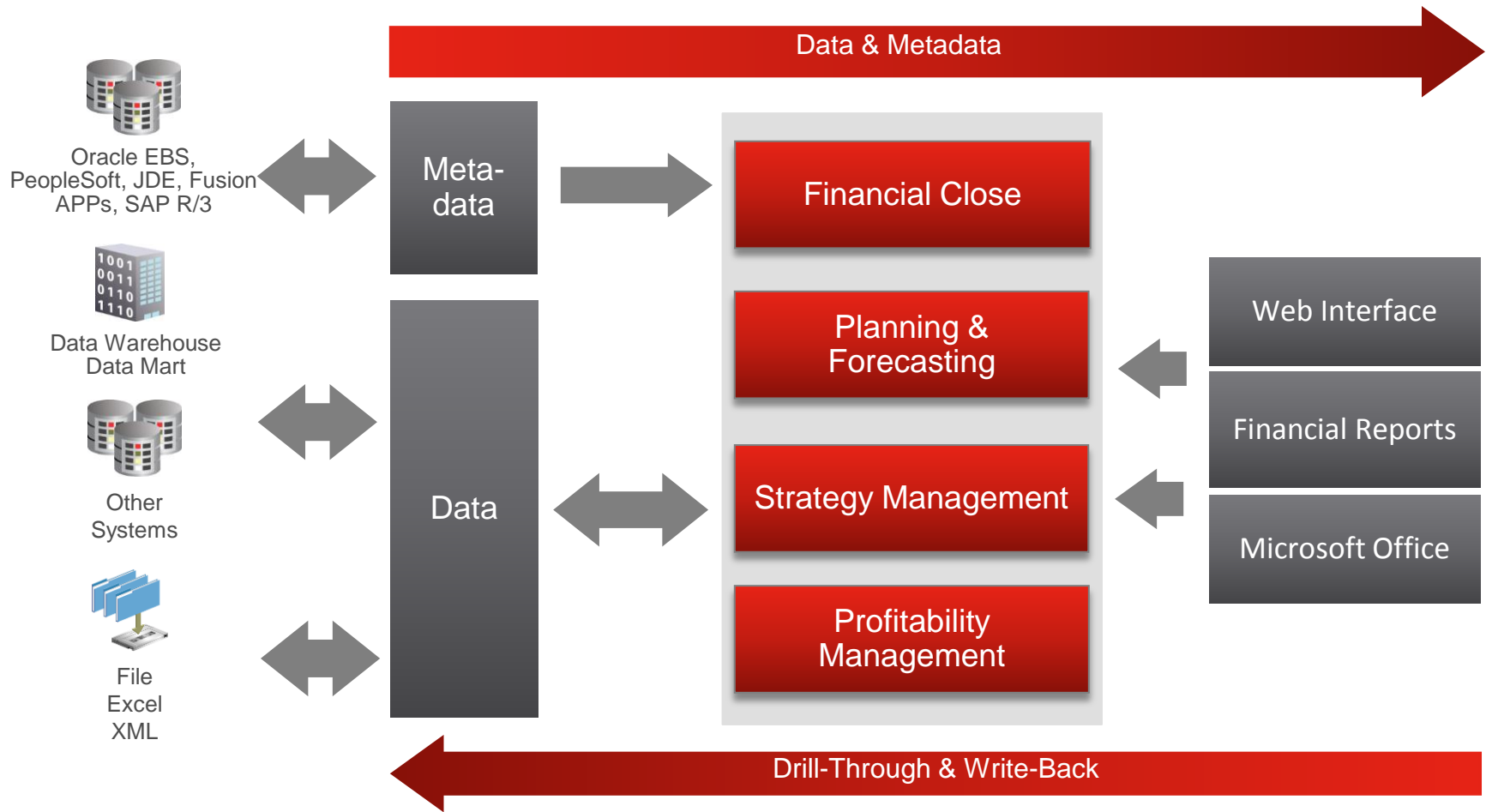
- No Change from today
- Must Purchase FDMEE and at least one adapter





## Process Elements

# Financial Data Quality Management – Enterprise Edition



## FDM-EE Supported Target EPM Platforms

**FD-MEE supports the following EPM target applications** (*Oracle Hyperion EPM Architect and Classic*):

- Planning
- The Planning module, Oracle Hyperion Public Sector Planning and Budgeting
- Financial Management
- Essbase ASO and Essbase BSO
  - If Essbase has been deployed in standalone mode, it must be registered with Shared Services since it does not work directly with FDMEE.
- Planning applications that rely on the standalone Essbase application cannot work directly with FDMEE either



# Understanding Drillback

## FDM-EE Supported Platforms

FDMEE allows drill thru data sourcing from the following ledgers

- **File-based data loads that enable users to import balances from delimited or fixed-width text files.**
- Oracle E-Business Suites 11i and 12
- Oracle Fusion Financials
- PeopleSoft Enterprise Financial Management 9.0 and 9.1
- PeopleSoft Enterprise Human Capital Management (HCM) 9.1
- PeopleSoft Commitment Control
- SAP ERP Financial and BW (Business Warehouse)
- JD Edwards General Ledger system

FDMEE supports Human Resource Data for

- PeopleSoft HCM 9.0 and 9.1

## FDM-EE Drill Back – How It Works

Drill Back is allowed from a base level data point to the source load and then to the source system.

- Data is only loaded at base level – you can only drill from that level
- Drill Region is enabled on the load
- Drill Back is allowed from any enabled hyperlink: FRS Reports, SmartView, Grids, Forms

The First Drill Back is from the target application to the load POV in FDM

- This allows the user to see the various loaded components
- Helps allow mapping and or formatting to answer the question

The second drill back launches a prepopulated query to your selected URL

- e.g. PeopleSoft 9.2 launches the Oracle login to the system and prepopulates the detailed query screen
- Allows access to journal detail

Table assignments can be changed using synonyms



# Upgrade Considerations

## Why FDMEE over FDM Classic?

Combines the best features of both FDM and ERP Integrator

- One stop shop
- Easy to setup and configure
- Individual adapter configuration not required
  - **Targets natively supported**
- **Client components not required (FDM Workbench)**
- Simplified menu structure and process creation

Built on Fusion Middleware Technology

- Supports many more platforms and browsers than FDM

Integrated with Shared Services

Eliminates the need for most of the complicated scripting required in prior versions of FDM through a more sophisticated way of handling mapping /Cross Dimensional Mapping

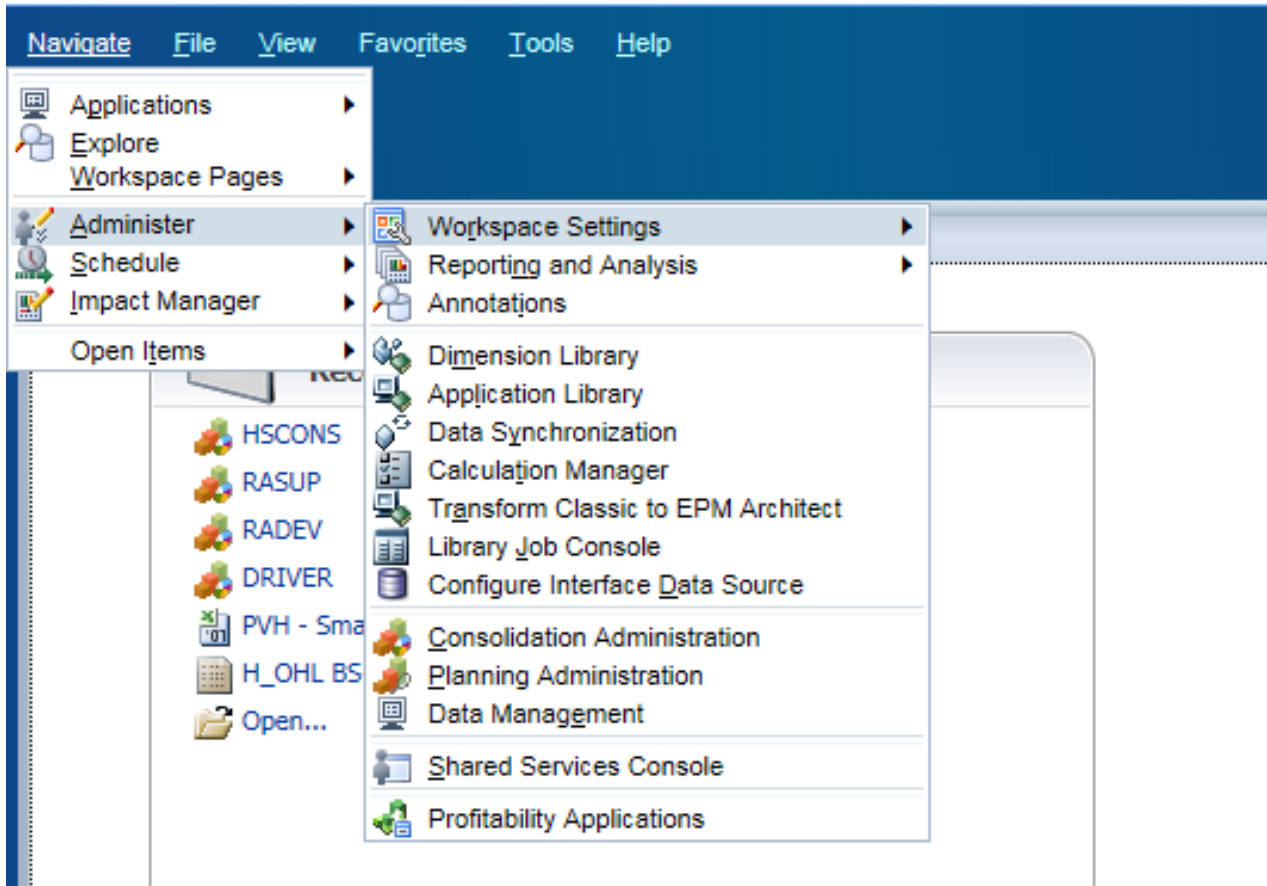


## FDM Classic 11.1.2.3

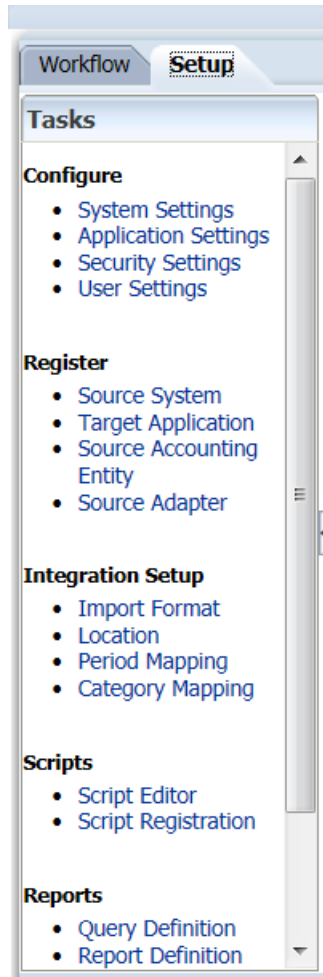
- Final Version of classic
  - All future upgrades will be within FDMEE
  - Last Version supporting VB scripting
  - Some scripting may not be necessary when changing to FDMEE platform
  - All Web Enabled
  - Shared Services Enabled
- Works and functions the same
  - Shared Services setup is required – no more internal security
  - Still have the gold fish!
- Target Systems are registered instead of adaptor
- Case by case basis

# FDM – EE Details You should know

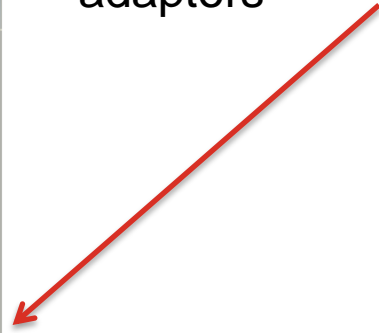
**ORACLE** Enterprise Performance Management System Workspace, Fusion Edition



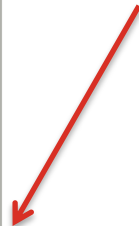
# FDM – EE Details You should know



Ease of Setup – No cryptic adaptors



Scripting Editor (LAST VB)



# FDM – EE Details You should know – Source Systems

Location Save Cancel

---

**PSOFT\_DIRECT : Details**

**Location Details** Integration Option

\* Name  Description

\* Import Format  \* Target Application

Source System  Accounting Entity

Functional Currency  Data Value

Parent Location

Check Entity Group  Logic Account Group

Check Rule Group

Import Format Save Cancel

|              |                         |        |
|--------------|-------------------------|--------|
| PSOFT_DIRECT | PSOFT_DIRECT Financials | HSCONS |
| PSOFTTHR     | File                    | HSCONS |

---

**PS\_DIRECT: Details**

Name  Source System

Accounting Entity  Source Adapter

Target Application  Drill URL

Description

---

**PS\_DIRECT: Mappings**

**Data Load Mapping** Write Back Mapping

| Source              |                     |                     |                     |                     | Target       |
|---------------------|---------------------|---------------------|---------------------|---------------------|--------------|
| Source Chartfield 1 | Source Chartfield 2 | Source Chartfield 3 | Source Chartfield 4 | Source Chartfield 5 | Dimensions   |
| Account             |                     |                     |                     |                     | Account      |
| Unit                |                     |                     |                     |                     | Cust8        |
| Unit                |                     |                     |                     |                     | DataSource   |
| Dept                |                     |                     |                     |                     | Department   |
| Role                |                     |                     |                     |                     | EmployeeRole |
| Unit                |                     |                     |                     |                     | Entity       |

# FDM – EE Details You should know – Easier Mapping setup and control

**Import Format** Save Cancel

|         |      |        |        |
|---------|------|--------|--------|
| PSOFTHR | File | HSCONS | HSCONS |
|---------|------|--------|--------|

---

**PS\_DIRECT: Details**

|                    |                     |                |                       |
|--------------------|---------------------|----------------|-----------------------|
| Name               | PS_DIRECT           | Source System  | PeopleSoft Financials |
| Accounting Entity  | HSUSA               | Source Adapter |                       |
| Target Application | HSCONS              | Drill URL      | <input type="text"/>  |
| Description        | PSOFT Direct access |                |                       |

---

**PS\_DIRECT: Mappings**

**Data Load Mapping** Write Back Mapping

| Source              |                     |                     |                     |                     | Target       |
|---------------------|---------------------|---------------------|---------------------|---------------------|--------------|
| Source Chartfield 1 | Source Chartfield 2 | Source Chartfield 3 | Source Chartfield 4 | Source Chartfield 5 | Dimensions   |
| Account             |                     |                     |                     |                     | Account      |
| Unit                |                     |                     |                     |                     | Cust8        |
| Unit                |                     |                     |                     |                     | DataSource   |
| Dept                |                     |                     |                     |                     | Department   |
| Role                |                     |                     |                     |                     | EmployeeRole |
| Unit                |                     |                     |                     |                     | Entity       |

**Data Load Mapping** Save Cancel

Dimensions  Data Table Column ACCOUNT

**All Mappings** Explicit Between In Multi Dimension Like

View  Export  Import  Restore Mapping  Delete Mappings  Delete All Mappings  Detach

| Type     | Source Value | Target Value | Rule Name | Description |
|----------|--------------|--------------|-----------|-------------|
| Explicit | 100200.LC    | AC100150     |           |             |
| Explicit | 100200.OC    | AC100255     |           |             |
| Explicit | 100200.US    | AC100100     |           |             |
| Explicit | 100500.LC    | AC100550     |           |             |
| Explicit | 115100       | AC115000     |           |             |
| Explicit | 115200       | AC115010     |           |             |

# FDM – EE Details You should know – The Fish Still Exist

Import      Validate      Export      Check

Load Data

View ▾   Format ▾   Show ▾   Download Template ▾   Load Journal     Freeze   Detach   Wrap

|    | Source-Entity | Entity | Source-Account | Account  | Source-ICP | ICP        | Source-Office | Office | Source-Service Line | Se |
|----|---------------|--------|----------------|----------|------------|------------|---------------|--------|---------------------|----|
| -- | HSUSA         | HSUSA  | 730010         | AC730010 |            | [ICP None] | BOS           | BOS    | CRP                 | CR |



## Q & A



**THANK YOU FOR YOUR TIME**

Please visit us online at [www.emtecinc.com](http://www.emtecinc.com)

**ORACLE** Platinum  
Partner